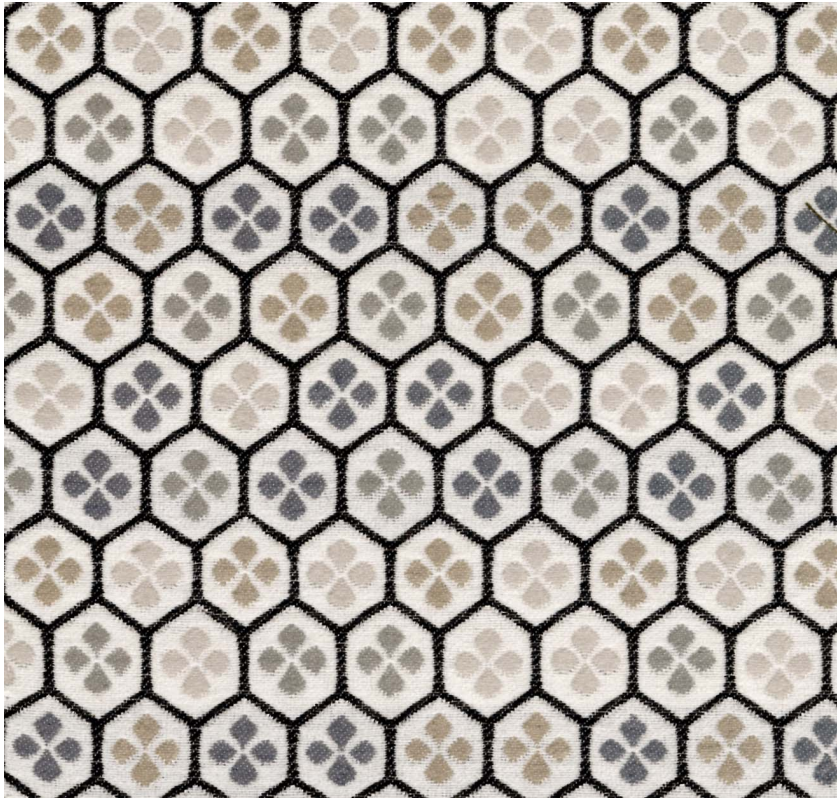


# posh textiles

Collection Name : Symphony  
Product Name : EXETER-FOG



## FABRIC INFORMATION

ACT Symbols:

Collection: Symphony

Width: 54 inches

Contents: 36% Polyester, 24% Nylon,  
20% Viscose, 20% Cotton

Color Family: Gray

Pattern: Geometric

3 years warranty

Repeat: Approx.V-2.95" H-3.38"

Cleaning: Fabric Care » W (Water)

Weight: 325 GSM

Shown Railroaded: No

## TECHNICAL SPECIFICATIONS

Wear Test: 50,000 Double Rubs  
(Wyzenbeek, Cotton Duck)

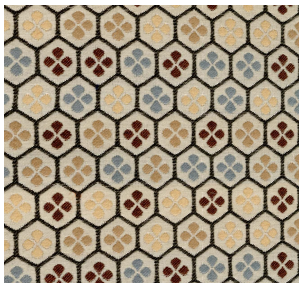
Fire Resistance: CAL117-2013, NFPA  
260, UFAC I

## APPLICATIONS

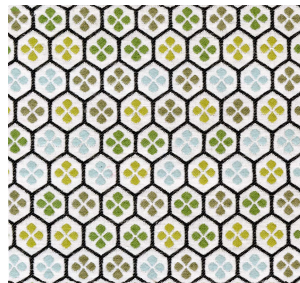
Guestroom Seating  
Residential Seating  
Food & Beverage Seating  
Nightclub  
Higher Education  
Senior Living

\$45.00/yard

## COLOR OPTIONS



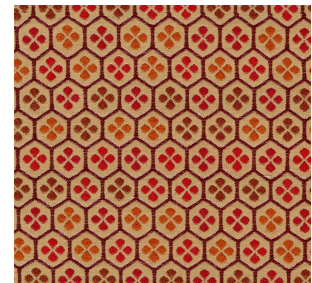
EXETER-BEIGE



EXETER-LIME



EXETER-RIVIERA



EXETER-SUNKIST