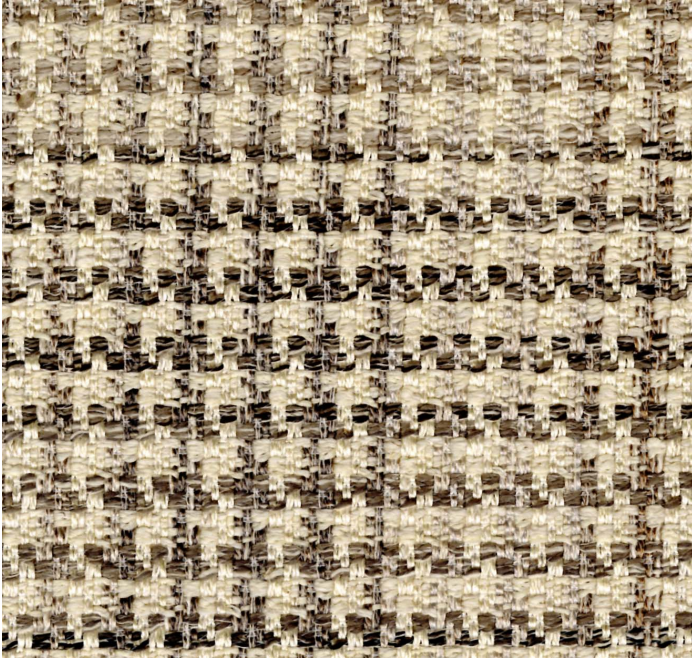


posh textiles

Collection Name : Country
Product Name : BEATRIZ-SLATE



FABRIC INFORMATION

ACT Symbols:

Collection: Country

Width: 54 inches

Contents: 71% Polyester, 15% Cotton, 7% Linen, 7% Viscose

Color Family: Brown

Pattern: Dogstooth / Houndstooth

3 years warranty

Repeat: Approx.V-7.00" H-7.00"

Cleaning: Fabric Care » W (Water)

Weight: 449 GSM

Shown Railroaded: No

TECHNICAL SPECIFICATIONS

Wear Test: 100,000 Double Rubs (Wyzenbeek, Cotton Duck)

Fire Resistance: CAL117-2013, NFPA 260, UFAC I

APPLICATIONS

Guestroom Seating

Residential Seating

Food & Beverage Seating

Nightclub

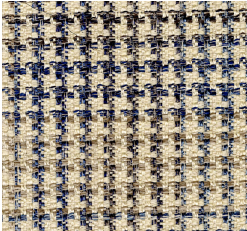
Higher Education

Senior Living

IMO

\$45.00/yd

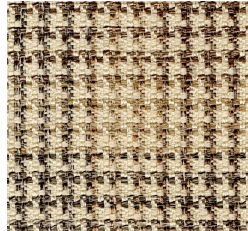
COLOR OPTIONS



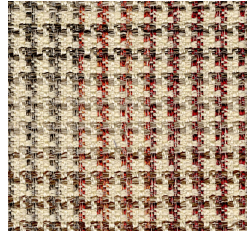
BEATRIZ-CADET



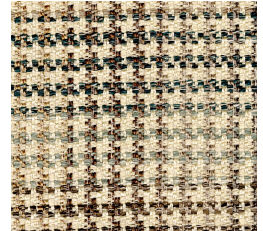
BEATRIZ-HONEY



BEATRIZ-NATURAL



BEATRIZ-RUST



BEATRIZ-TEAL

Posh Textiles

W: +1 (212) 629-7241

info@poshtextiles.com

<https://poshtextiles.com>

Actual product may
differ in scale,color
texture and finish

© 2024 Posh Textiles

*Act Registered
Certificate Marks